

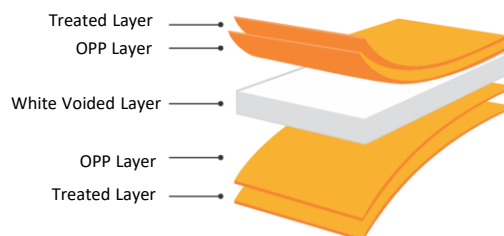
POLER 142S

Cold Sealable, Both Sides Treated

Pearlized BOPP Film

- Features:**
- Excellent opacity, gloss and stiffness
 - Low density and high yield
 - Outstanding cold sealing strength
 - Excellent adhesive adhesion
 - Cost-saving converting process due to its natural white color

- Application:**
- Cold sealable, white opaque cavitated film for single or multilayer packaging of cakes, chocolates and confectionary wherever pearlized effect is required.



Specification	Test Method	Unit	Test Direction	30μ	35μ	50μ
Yield	ASTM D4321	m ² /Kg	-	46.9	40.2	28.1
Wetting Tension	ASTM D2578	Dyne/cm	Treated Side	≥36		
Tensile Strength	ASTM D882	N/mm ²	MD	80		
			TD	150		
Elongation at Break	ASTM D882	%	MD	160		
			TD	40		
Thermal Shrinkage (120 °C, 5 min)	ASTM D1204	%	MD	≤4		
			TD	≤2		
Opacity	DIN 53146	%	-	65	70	73
Gloss	ASTM D2457	%	-	75		
Density	ASTM D1505	g/cm ³	-	0.71		
Dynamic C.O.F	ASTM D1894	-	Film-Film	0.45		
			Film-Metal	0.35		

MD: Machine direction, TD: Transverse direction

Available thicknesses: All thicknesses between 25 - 60 μ can be produced upon request.

This film complies with the EU and FDA regulations. Specific documents are available upon request.

POLFILM does not guarantee the typical values. Any data included herein is based on the analysis of representative samples and not the actual product shipped.

POLFILM strongly suggests that before any vast usage, make sure to study "Customer's Guide" and test our product in limited amounts.

NO guarantee is made regarding information presented in this document. The user is solely responsible for all determinations regarding use and therefore POLFILM denies any responsibility for any loss or damage that may occur from the use of this information.

Storage and Handling:

- Films should be stored on the pallets in a closed dry place and should not be exposed to direct sunlight and heating sources, it means at a safe distance of not less than 1 meter.
- Storage temperature between 10°C to 35°C and in relative humidity less than 60% is recommended in order to minimize the deterioration of the film properties.
- The film should be kept in workplace at least 24 hours before being used.
- It is advisable to manage the inventory according to the delivery dates (first in – first out).

Indication of Surface Treatment:

- POLFILM film is usually supplied with treatment on the outside surface that is indicated on the label of each roll, although all films can be supplied either with treatment on the inside surface. Which should be agreed with our sales department before ordering.

Printability/Lamination:

- A standard corona test pen should be used to check surface treatment before use of each roll.
- To check accurately of the surface treatment in laboratory, standard corona solution (ASTM D2578) or contact angle measurement (ASTM D5946) can be used.
- If it is required, customers could do in-line treatment during converting process.
- It is recommended to use solventless lamination adhesive "Lamtec SL110A/210B". For more information, please check www.persiachasb.com

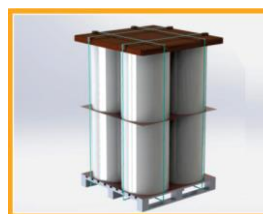
Standard Roll Dimension:

Core Inner Diameter (inch)	Roll Diameter (mm)	Width Dimension (mm)	Width Tolerance (mm)
3	520 - 540	30 up to 1650	- 0 & +3
6	720 - 770	280 up to 2400	

To calculate the diameter, length and weight of each roll, you can use the calculator on POLFILM website

Packaging:

- Films are packed vertically or horizontally on pallets.
- Normally, 6-inch rolls are palletized in horizontal direction and 3-inch rolls are palletized vertically depending on the width.
- For more information, please contact our sales department.



Food Contact:

- This film complies with EU and FDA regulations. Specific documents and MSDS are available on request.